

Company Profile:



SQUARE 'V' ENGINEERING ENTERPRISES

“RACE FOR QUALITY HAS NO FINISH LINE”

SURVEY NO: 298(P), PIPE LINE

ROAD, PHASE-1,

IDA, JEEDIMETLA

HYDERABAD-500 055.

PHONE : 9182830625

E-MAIL:

info.squarev@gmail.com

The Company:

Square V Engineering Enterprises

Square V Engineering Enterprises, founded by seasoned technocrats, is a leading name in **Electrical Panel Board manufacturing and Industrial Automation solutions** based in Hyderabad.

Why We Stand Out

- **Customer-Centric Approach:** We collaborate closely with clients to understand their unique requirements and deliver solutions tailored to exact specifications.
- **Safety & Reliability:** Every system we design is aligned with stringent industry safety standards, ensuring products that are safe, reliable, and scalable.
- **Innovation & Flexibility:** Our ability to adapt and innovate has positioned us as pioneers in the field within a remarkably short span.

Our Strengths

- **Advanced Facilities:** State-of-the-art manufacturing infrastructure that supports precision engineering and high-quality output.
- **Expert Team:** A highly motivated workforce of qualified professionals in production and sales, committed to exceeding customer expectations.
- **Quality Commitment:** Continuous focus on delivering superior products and unmatched service to meet the evolving demands of our clients.

At Square V, we don't just build switchgear and control gear systems—we build **trust, safety, and long-term partnerships**.

THE PROMOTERS

Venkateswarlu. K

He is a Graduate in Electrical Engineering from JNTU University with more than four decades of rich experience in the cement industry. Over the course of his career, he has specialized in electrical design, plant operations, and large-scale project execution. His expertise includes commissioning some of the largest cement factories and successfully handling complex industrial projects, demonstrating exceptional leadership and technical proficiency. With this extensive background, he has built a reputation for delivering reliable solutions and driving operational excellence across diverse industrial environments.

GOVINDAYYA.K

He is a Graduate Engineer in Electronics and Communication Engineering from Andhra University with over two decades of experience in industrial automation and electrical systems. His expertise spans the design, operation, and maintenance of field instrumentation, control panel design, PLC programming, and automation solutions. He has extensive hands-on knowledge of variable speed drive (VFD) applications ranging from 0.75 kW to 560 kW, as well as HT/LT electrical installations. Over the course of his career, he has worked with leading organizations including The Larsen & Toubro Limited, Mahindra & Mahindra Limited, and major cement plants in Andhra Pradesh, contributing to large-scale projects with precision and reliability.

Our Product Range:

Electrical:

- Power Control Centers (PCC).
- Motor Control Centers (MCC).
 - o (Draw out and Non-Draw out)
- Power Distribution Panels and Boxes.
- DG, AMF & Synchronizing Panels.
- Lighting Distribution Boards.
- Control and Relay Panels, Bus dusts.
- Control Desks.
- Automatic Power Factor Correction panels.
- Instrument Panels.
- Industrial Lighting and Erection Work.

Instrumentation:

- PLC Panels (PLC).
- Sequential Control Panels.
- PLC, HMI, SCADA Software Development.
- Remote I/O and Marshalling panels.
- VFD(AC) drives solutions.
- Engineering and Support Services for Automation Sectors.

Field Services:

- Erection and Commissioning of MCC and PCC at customer locations.
- Supply and Commissioning of VFD drives.
- Supply and installation of HMI and Visual display panels
- Retrofitting solutions for existing Equipments
- PLC programming services.
- Energy Conservative solutions for industry.
- Annual Maintenance Contracts.

THE DESIGN CAPABILITY:

We possess strong design capabilities and specialize in the development of LT Panels and automation systems tailored to specific customer requirements. Backed by extensive experience, we are well-equipped to deliver innovative designs that address unique challenges and ensure reliable performance. Our commitment to quality and safety is reinforced by the prestigious certificate of approval from CPRI, Bangalore, underscoring our credibility and excellence in the field



THE FINISH:

- Our panels are distinguished by superior aesthetics, precision, and finish. Using only CRCA sheet steel sourced directly from reputed manufacturers, each panel is fully powder-coated to achieve a durable and sophisticated surface.
- For instrumentation panels, the key strength lies in understanding customer-specific logic and requirements, enabling us to design and build solutions that are accurate, reliable, and tailored to individual needs.

THE SYSTEMS:

We follow well-structured systems to support our workforce and ensure efficiency at every stage of production. Each item manufactured in our facility is provided with complete traceability, guaranteeing accountability and precision. In addition, strict quality assurance systems and rigorous testing procedures are consistently implemented, reinforcing our commitment to reliability and adherence to industry standards.

QUALITY POLICY:

“RACE FOR QUALITY HAS NO FINISH LINE”

SOME OF OUR ESTEEMED CUSTOMERS:

- ❑ Orange And Green
- ❑ Toshali Cement (P) Ltd
- ❑ Bheema Cements Ltd
- ❑ Volta Impex (P) Ltd (Export)
- ❑ HBL Power Systems Ltd
- ❑ Bhavya Cements Ltd
- ❑ Panyam Cements And Mineral Industries Ltd
- ❑ Bharathi Cement Corporation Ltd
- ❑ Sujala Infra Ltd.

OVERSEAS CUSTOMERS (THROUGH EXPORTER)

- ❑ Diamond cement S.A, Togo
- ❑ Diamond Cement Ltd., Ghana
- ❑ Savanna Diamond Cement Company Ltd., Ghana
- ❑ Diamond Cement, Diogare, Mali
- ❑ Diamond Cement, Astro, Mal
- ❑ Diamond Cement, Burkina – faso
- ❑ Fortia Cement S.A, Togo
- ❑ Ethio Cement PLC, Ethiopia.

Our Portfolio...

Electrical:

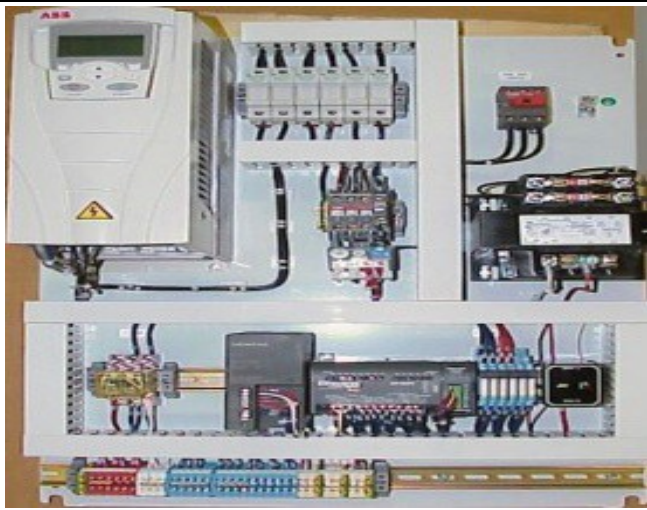
Export quality Motor Control & Panel Control Center etc...



Control Panels...



Control Panel Wiring Details...

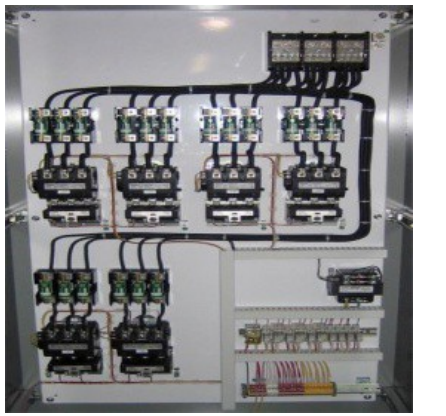
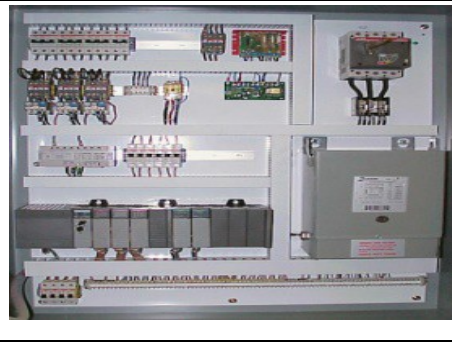
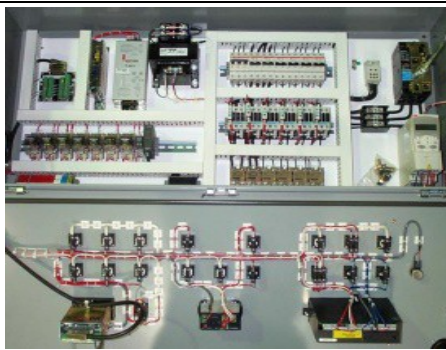
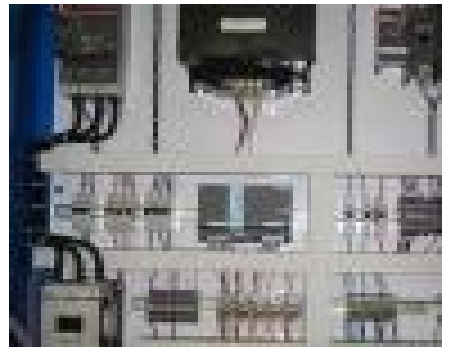
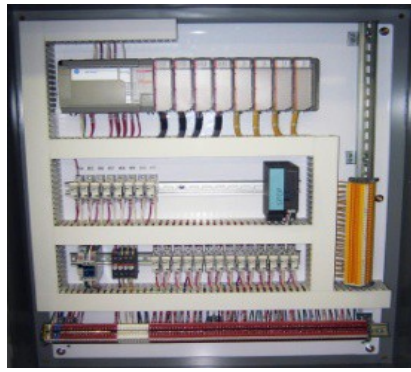
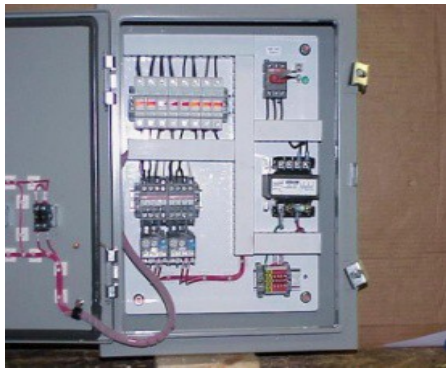




2016 Legrand Switchgear (NSL Mining Project)



Instrumentation Panels:



Materials Supply: Authorised Dealer for BCH



Field Services:

- Erection and Commissioning of Electrical panels
- Installation of Industrial lighting
- Retrofitting services for OLD/obsolete panels
- PLC Controllers for automatic operations.

Our Factory Premises...



Major projects:

- ↘ Vamsi ram Projects VALANCIA RESIDENTIAL, COMMERCIAL & LORVEN
- ↘ Jain Constructions – Malkajgiri Residential and Jains Balaji
- ↘ Jains Fairmont - Gundlapochampalli
- ↘ AP Electricals - BIOCON VIZAG project
- ↘ Rainbow Hospitals Hyderabad
- ↘ Omega Hospitals
- ↘ DLF Hyderabad – LT panels
- ↘ Sattva knowledge Park
- ↘ Myspace – Bachupally
- ↘ Rain cement
- ↘ Shree cement – Guntur & Karnataka (Kodala)
- ↘ Nagarjuna Cements (NCL) – AP, Telangana
- ↘ Shirdi Sai Electricals Ltd -Kadapa
- ↘ Prestige Sky Tech – Hyderabad
- ↘ WNS global service pvt ltd
- ↘ Skandhanshi Empire Building
- ↘ Lanco Hills
- ↘ Hyderabad Institute of Oncology
- ↘ Radiant-RSCC Specialty Cable Private Limited
- ↘ METROCHEM API PVT LTD
- ↘ Thermo Fisher Lab